

Volunteer!

Please complete the following and submit to the volunteer coordinator if you would like to be contacted about volunteering.

Name: _____

E-mail: _____

Phone: _____

Alt. Phone: _____

Which sites are you interested in volunteering in?

Bentsen Rio Grande Valley SP in Mission

Estero Llano Grande SP in Weslaco

Resaca de la Palma SP in Brownsville

Texas Parks and Wildlife Department maintains the information collected through this form. With few exceptions, you are entitled to be informed about the information we collect. Under Sections 552.021 and 552.023 of the Texas Government Code, you are also entitled to receive and review the information. Under Section 559.004, you are also entitled to have this information corrected.



www.worldbirdingcenter.org



4200 Smith School Road • Austin, Texas 78744
www.tpwd.state.tx.us

©2007 Texas Parks and Wildlife Department PWD BR P4502-058P (10/07)

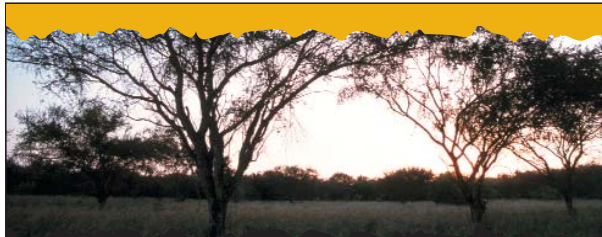
Volunteer Opportunities



Bentsen-Rio Grande Valley SP - Mission, Texas



Estero Llano Grande SP - Weslaco, Texas



Resaca de la Palma SP - Brownsville, Texas



For More Information: Jennifer Hall
Volunteer Coordinator
(956) 584-9156 ext. 237
Jennifer.hall@tpwd.state.tx.us
2800 S. Bentsen Palm Drive
Mission, TX 78572

TEXAS PARKS AND WILDLIFE

Make a Difference Volunteer



Green Jay

“You make a living by what you get, but you make a life by what you give.”

—Winston Churchill



**WORLD BIRDING
CENTER**

www.worldbirdingcenter.org

*A variety of
volunteer opportunities
awaits you!*



We provide on-the-job training with guidance to help you utilize and increase your skills. You'll have fun and meet other people who love nature.

Woodland Restoration - Plant and care for native plants in our projects to turn farmland into wildlife habitat.

Wildlife Watcher - Share your knowledge of native fauna and flora with visitors while stationed at specific locations within the park.

Tram Assistant - Provide visitors with information about the park while riding the tram.

Trail/Grounds Keeper - Maintain trails and grounds to keep the park beautiful and accessible to all visitors.

School Programs - Assist with school field trips and/or student outreach programs.

Research Assistant - Participate in citizen science projects and other field studies led by our biologists.

Park Maintenance - Help us keep our parks looking their best by completing a variety of maintenance projects.



Photo Specialist - Assist with managing the photos taken at the park by naming, filing and resizing digital images as well as creating CDs to be used by staff.

Office Assistant - Assist with a variety of office tasks including copying, filing, data entry, etc.

Nature Walk Guide - Participate in nature walks and share your wildlife knowledge with guests.

Greeter - Provide visitors with information on activities and facilities.

Gift Shop Assistant - Greet visitors, assist with inventory, displays and sales.

Butterfly Garden/Landscape Attendant - Care for the butterfly gardens and other landscape features.

Park Host Opportunities Available - Limited number of RV sites available in exchange for part-time work at the park. Hosts must be willing and able to a variety of tasks from visitor services to maintenance to special projects. Please contact the volunteer coordinator for more information on this special opportunity.

Bird Feeder - Maintain and fill bird feeding stations and hummingbird feeders.

Texas Parks and Wildlife World Birding Center Goals

- Conserve, protect and restore native habitat.
- Provide wildlife watching experiences.
- Demonstrate how the public can incorporate conservation at home.
- Support community involvement and sustainable nature tourism.
- Promote appreciation and stewardship of the environment.



*"A civilization flourishes when
people plant trees under which
they will never sit."*

— Greek Proverb